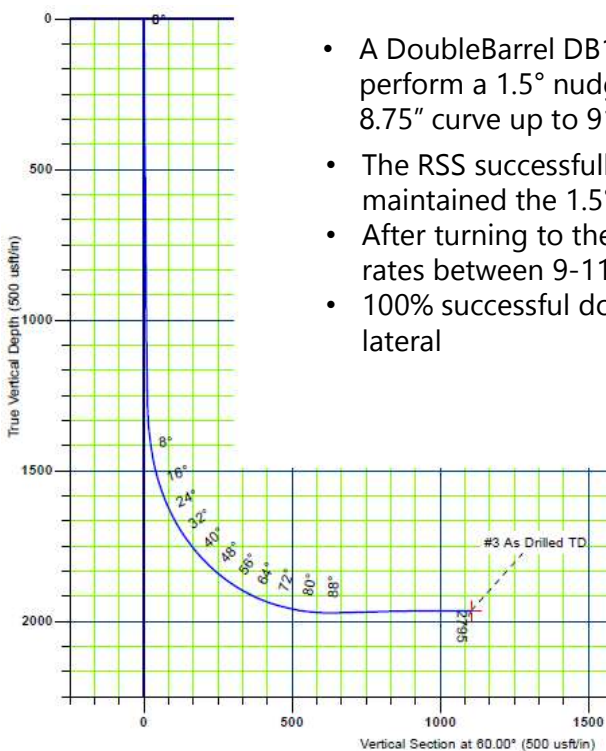


PROOF OF PERFORMANCE



Rotary Steerable System



- A DoubleBarrel DB15 RSS was utilized to sidetrack off of a cement plug, perform a 1.5° nudge to the north, turn to 60° azimuth while building a 8.75" curve up to 91.5° inclination.
- The RSS successfully kicked off of the cement plug within 25ft and maintained the 1.5° nudge due north
- After turning to the 60° azimuth target, the RSS built the curve at rates between 9-11° per 100' – landing at 91.5° inclination
- 100% successful downlinking to the RSS throughout the curve and lateral



6 3/4" DB15 RSS



*Small business attitude,
Big business results*

WWW.DBDHT.COM